

New Generation Homes  
3 Widefield Blvd.  
Colorado Springs CO 80911

CONSENT AND RATIFICATION OF  
DECLARATION OF COVENANTS, CONDITIONS AND RESTRICTIONS  
OF THE GLEN FILING NO. 5  
EL PASO COUNTY, COLORADO

RECITALS

- A. WHEREAS, a Declaration (the "Declaration") of Covenants, Conditions and Restrictions of The Glen Filing No. 5 was recorded by Widefield Homes Inc., a Colorado corporation (the "Declarant") on December 5, 2005, in Reception No. 205193152 of the real property records of El Paso County, Colorado;
- B. Whereas, the Declarant's signatures were inadvertently omitted from the Declaration and the Declarant seeks to correct that omission.
- C. Whereas, the Declarant desires to ratify and affirm to the Declaration as recorded and as applying to the real property described on Exhibit A hereto and incorporated herein by reference (the "Property").

NOW, THEREFORE, the Declarant, as the owner of the Property, does hereby ratify, consent to, adopt, and approve the Declaration as recorded and does hereby consent and agree that the covenants, terms, easements, and restriction thereof shall apply fully to the Property and further covenants that the Declaration shall run with the land and the Property and be a burden and benefit to any person or party having any interest in the Property, their grantees, successors, heirs, assigns, and encumbrancers.

IN WITNESS WHEREOF, the Declarant has executed this Consent and Ratification as of this 20 day of March, 2006.

DECLARANT:

Attest:  
Roger DeBor  
Secretary

Widefield Homes, Inc.  
a Colorado corporation  
By: [Signature]  
Its: President

RECORDER NOTE: Legibility of writing, typing or printing UNSATISFACTORY in portions of this document when received

ROBERT C. "BOB" BALINK El Paso County, CO  
03/24/2006 08:44:37 AM  
Doc \$0.00 Page  
Rec \$31.00 1 of 6 206042448

31-

CR 5691

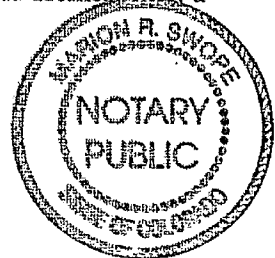


STATE OF COLORADO )  
 ) ss.  
 COUNTY OF EL PASO )

The foregoing instrument was acknowledged before me this 20<sup>th</sup> day of March, 2006,  
 by Jules M. Watson, as President of Widefield Homes, Inc., a  
 Colorado corporation.

Witness my hand and official seal.

My commission expires: 3-26-06



Marion R. Swape  
 Notary Public

EXHIBIT A

THE GLEN AT WIDEFIELD SUBDIVISION  
FILING NO. 5

LAND DESCRIPTION:

A tract of land situated in Sections 21 and 28, Township 15 South, Range 65 West of the 6th P.M., County of El Paso, State of Colorado and being more particularly described as follows:

Beginning at the Northeasterly corner of The Glen at Widefield Subdivision Filing No. 1, as recorded at Reception No. 201107265 of the records of the office of the Clerk and Recorder of said County, said point being also a point on the southerly line of Peaceful Valley Subdivision Filing No. 2, as recorded in Book H-5 at Page 72 of said records; Thence along the said southerly and easterly lines of said Peaceful Valley Subdivision Filing No. 2, the following two courses:

- 1) S86 38'15"E, a distance of 483.41 feet;
- 2) Thence N00 05'19"W, a distance of 461.20 feet; to the Northeasterly corner of said Peaceful Valley Subdivision Filing No. 2, said point being also an angle point on the Southeasterly line of Lot 48, Vacation and Replat of Lots 42 through 48, Peaceful Valley Estates as recorded in Book Y-2 at Page 26 of said records, and the Northwest Corner of the Southeast One-Quarter (SE 1/4) of said Section 21;

Thence N89 41'22"E, along the North line of said Southeast One-Quarter (SE 1/4) of Section 21, a distance of 855.56 feet; Thence S00°17'48"E, a distance of 339.63 feet; Thence along the arc of a curve to the left having a central angle of 29 28'56", a radius of 1250.00 feet, an arc length of 643.20 feet; Thence S29 46'44"E, a distance of 1154.12 feet; Thence along the arc of a curve to the right having a central angle of 28 56'44", a radius of 1150.00 feet, an arc length of 580.97 feet; Thence S00 50'00"E, a distance of 530.02 feet; Thence along the arc of a curve to the right having a central angle of 13 21'59", a radius of 1150.00, an arc length of 262.28 feet; Thence S77 28'01"E, a distance of 10.00 feet; Thence S12 31'59"W, a distance of 323.83 feet; Thence along the arc of a curve to the left having a central angle of 12 49'51", a radius of 778.09 feet, an arc length of 174.24 feet; Thence S00 17'52"E, a distance of 56.93 feet; Thence along the arc of a curve to the left having a central angle of 90 00'00", a radius of 100.00 feet, an arc length of 157.08 feet to a point on the southerly line of the Northeast One-Quarter (N.E.1/4) of the Northeast One-Quarter (N.E.1/4) of said Section 28; Thence S89 42'08"W along said southerly line, a distance of 320.00 feet to a point on the Easterly line of a tract of land described in Deed 203276729. Thence along said easterly and northerly lines of said tract, the following eleven (11) courses:

- 1) Along the arc of a non-tangential curve to the left having a central angle of 90 00'00, a radius of 100.00 feet, an arc length of 157.08, whose chord bears N44 42'08"E;
- 2) Thence N00 17'52"W, a distance of 56.93 feet;
- 3) Thence along the arc of a curve to the right having a central angle of 12 49'51", a radius of 898.09 feet, an arc length of 201.12 feet;
- 4) Thence N12 31'59"E, a distance of 217.83 feet;

- 5) Thence N80 43'51"W, a distance of 90.27 feet;
- 6) Thence N51 37'21"W, a distance of 229.95 feet;
- 7) Thence N35 00'00"W, a distance of 339.98 feet;
- 8) Thence N53 59'59"W, a distance of 170.64 feet;
- 9) Thence N17 59'42"W, a distance of 222.45 feet to a point on Northerly line of said Section 28;

10) Thence S89 39'42"W along said Northerly line, a distance of 921.55 feet;

11) Thence S00°16'22"W, a distance of 40.65 feet

to the Easterly line of The Glen at Widefield Subdivision Filing No. 4 as recorded under Reception No.203290551 in the records of the Clerk and Recorders Office of said County; Thence along said The Glen at Widefield Subdivision Filing No. 4, the following six (6) courses:

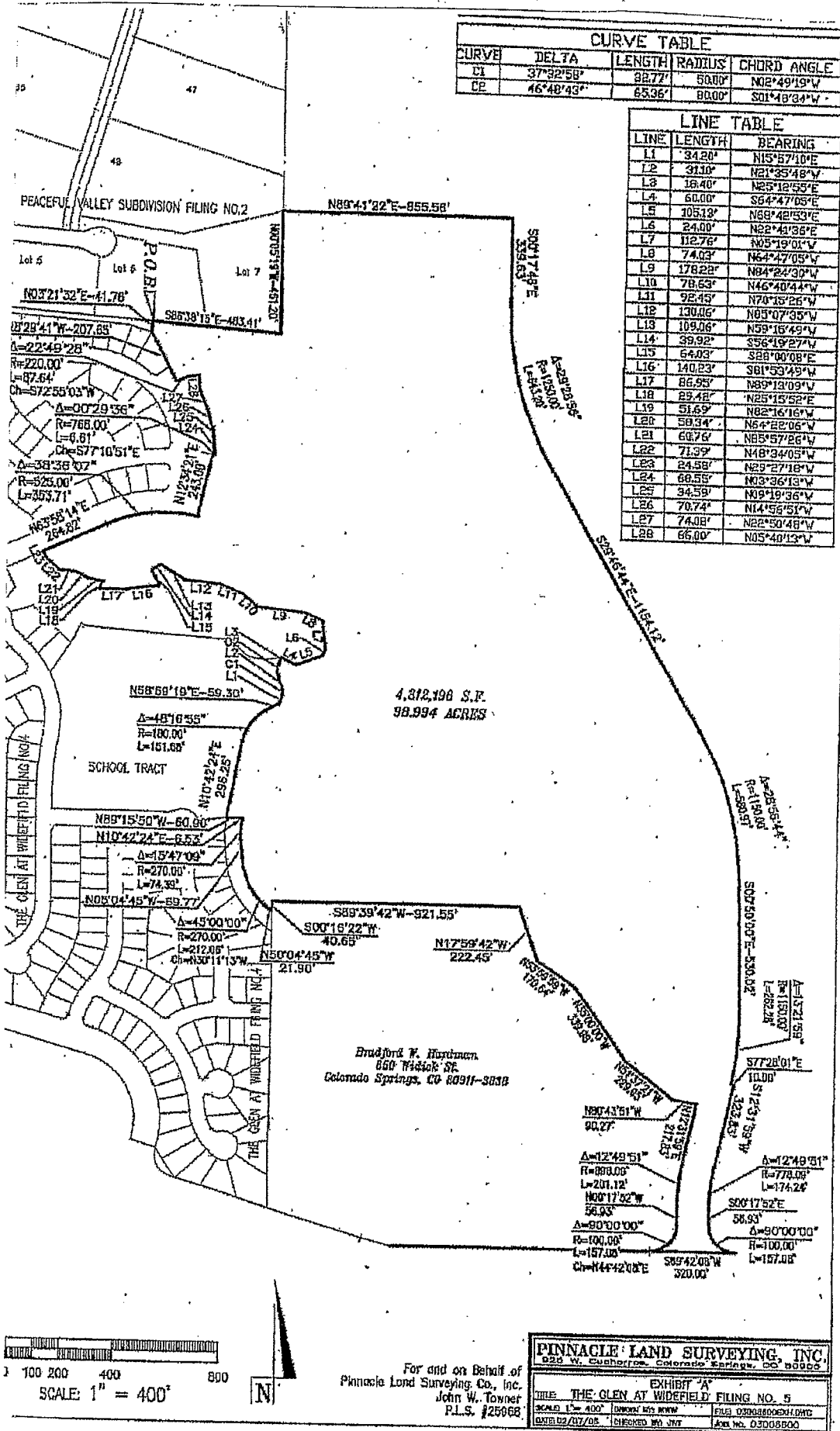
- 1) N50°04'45"W, a distance of 21.90 feet;
- 2) Thence along the arc of a non-tangential curve to the right, having a central angle of 45°00'00", a radius of 270.00 feet, an arc length of 212.06 feet;
- 2) Thence N05°04'45"W, a distance of 69.77 feet;
- 3) Thence along the arc of a curve to the right, having a central angle of 15°47'09", a radius of 270.00 feet, an arc length of 74.39 feet;
- 4) Thence N10°42'24"E, a distance of 6.53 feet;
- 5) Thence N89°15'50"W, a distance of 60.90 feet;

Thence N10°42'24"E, a distance of 296.25 feet; Thence along the arc of a curve to the right, having a central angle of 48°16'55", a radius of 180.00 feet, an arc length of 151.68 feet; Thence N58°59'19"E, a distance of 59.30 feet; Thence N15°57'10"E, a distance of 34.20 feet; Thence along the arc of a curve to the left, having a central angle of 37°32'58", a radius of 50.00 feet, an arc length of 32.77 feet; Thence N21°35'48"W, a distance of 31.10 feet; Thence along the arc of a curve to the right, having a central angle of 46°48'43", a radius of 80.00 feet, an arc length of 65.36 feet; Thence N25°12'55"E, a distance of 18.40 feet to a point on the southerly line of said The Glen at Widefield Subdivision Filing No. 4; Thence along the easterly and northerly lines of said The Glen at Widefield Subdivision Filing No. 4 the following twenty (20) courses:

- 1) Thence S64°47'05"E, a distance of 60.00 feet;
- 2) Thence N68°42'53"E, a distance of 105.13 feet;
- 3) Thence N22°41'36"E, a distance of 24.00 feet;
- 4) Thence N05 19'01"W, a distance of 112.76 feet
- 5) Thence N64 47'05"W, a distance of 74.03 feet;
- 6) Thence N84 24'30"W, a distance of 178.22 feet;
- 7) Thence N46 40'44"W, a distance of 78.63 feet;
- 8) Thence N70 15'26"W, a distance of 92.45 feet;
- 9) Thence N85 07'35"W, a distance of 130.06 feet;
- 10) Thence N59 15'49"W, a distance of 109.06 feet;
- 11) Thence S56 19'27"W, a distance of 39.92 feet;
- 12) Thence S28 00'08"E, a distance of 64.03 feet;
- 13) Thence S81 53'49"W, a distance of 140.23 feet;
- 14) Thence N89 13'09"W, a distance of 86.95 feet;
- 15) Thence N25 15'52"E, a distance of 29.42 feet;
- 16) Thence N82 16'16"W, a distance of 51.69 feet;
- 17) Thence N64 22'06"W, a distance of 58.34 feet;
- 18) Thence N85 57'26"W, a distance of 60.76 feet;

- 19) Thence N48 34'05"W, a distance of 71.39 feet;
  - 20) Thence N29 27'18"W, a distance of 24.58 feet
- to a point on the southeasterly right-of-way line of Wayfarer Drive as recorded in The Glen at Widefield Subdivision Filing No. 1, by Reception No. 201107265 of said records; Thence along the southerly and easterly lines of said The Glen at Widefield Subdivision Filing No. 1 the following twelve (12) courses:
- 1) Thence N63 58'14"E, a distance of 264.82 feet;
  - 2) Thence along the arc of a curve to the right having a central angle of 38 36'07", a radius of 525.00 feet; an arc length of 353.71 feet;
  - 3) Thence N12 34'21"E, a distance of 243.00 feet;
  - 4) Thence along the arc of a non-tangential curve to the right having a central angle of 00 29'36", a radius of 768.00 feet, an arc length of 6.61 feet, whose chord bears S77 10'51"E;
  - 5) Thence N03 36'13"W, a distance of 68.55 feet;
  - 6) Thence N09 19'36"W, a distance of 34.59 feet;
  - 7) Thence N14 56'51"W, a distance of 70.74 feet;ng sai
  - 8) Thence N22 50'48"W, a distance of 74.08 feet;
  - 9) Thence N05 40'13"W, a distance of 66.00 feet;
  - 10) Thence along the arc of a non-tangential curve to the left having a central angle of 22 49'28", a radius of 220.00 feet, an arc length of 87.64 feet; whose chord bears S72 55'03"W;
  - 11) Thence N28 29'41"W, a distance of 207.65 feet;
  - 12) Thence N03 21'32"E, a distance of 41.76 feet to the Point of Beginning.

EXHIBIT A



CURVE TABLE				
CURVE	DELTA	LENGTH	RADIUS	CHORD ANGLE
C1	37°32'58"	82.77'	500.0'	N02°49'19"W
C2	46°48'43"	65.96'	800.0'	S01°48'34"W

LINE TABLE		
LINE	LENGTH	BEARING
L1	34.20'	N15°57'01"E
L2	31.10'	N21°35'48"W
L3	18.40'	N65°18'55"E
L4	60.00'	S64°47'05"E
L5	105.13'	N68°42'53"E
L6	24.00'	N82°44'38"E
L7	112.76'	N05°19'01"W
L8	74.03'	N64°47'05"W
L9	178.22'	N84°24'39"W
L10	78.63'	N46°40'44"W
L11	92.45'	N70°15'26"W
L12	130.06'	N05°07'35"W
L13	109.06'	N59°18'49"W
L14	39.92'	S56°19'27"W
L15	64.03'	S88°00'08"E
L16	140.23'	S81°53'49"W
L17	86.95'	N89°12'09"W
L18	29.42'	N25°15'52"E
L19	51.69'	N82°16'16"W
L20	59.34'	N64°22'06"W
L21	60.76'	N85°57'26"W
L22	71.99'	N48°34'05"W
L23	24.58'	N25°27'18"W
L24	66.55'	N03°36'13"W
L25	34.59'	N09°19'36"W
L26	70.74'	N14°58'51"W
L27	74.08'	N22°50'48"W
L28	66.00'	N05°40'13"W

**PINNACLE LAND SURVEYING, INC.**  
 626 W. Colorado, Colorado Springs, CO 80902

For and on Behalf of  
 Pinnacle Land Surveying Co., Inc.  
 John W. Towner  
 P.L.S. #25668

EXHIBIT "A"  
 TITLE: THE GLEN AT WIDEFIELD FILING NO. 5  
 SCALE: 1" = 400' DRAWN BY: JMT  
 DATE: 02/07/05 CHECKED BY: JMT Job No. 03085600